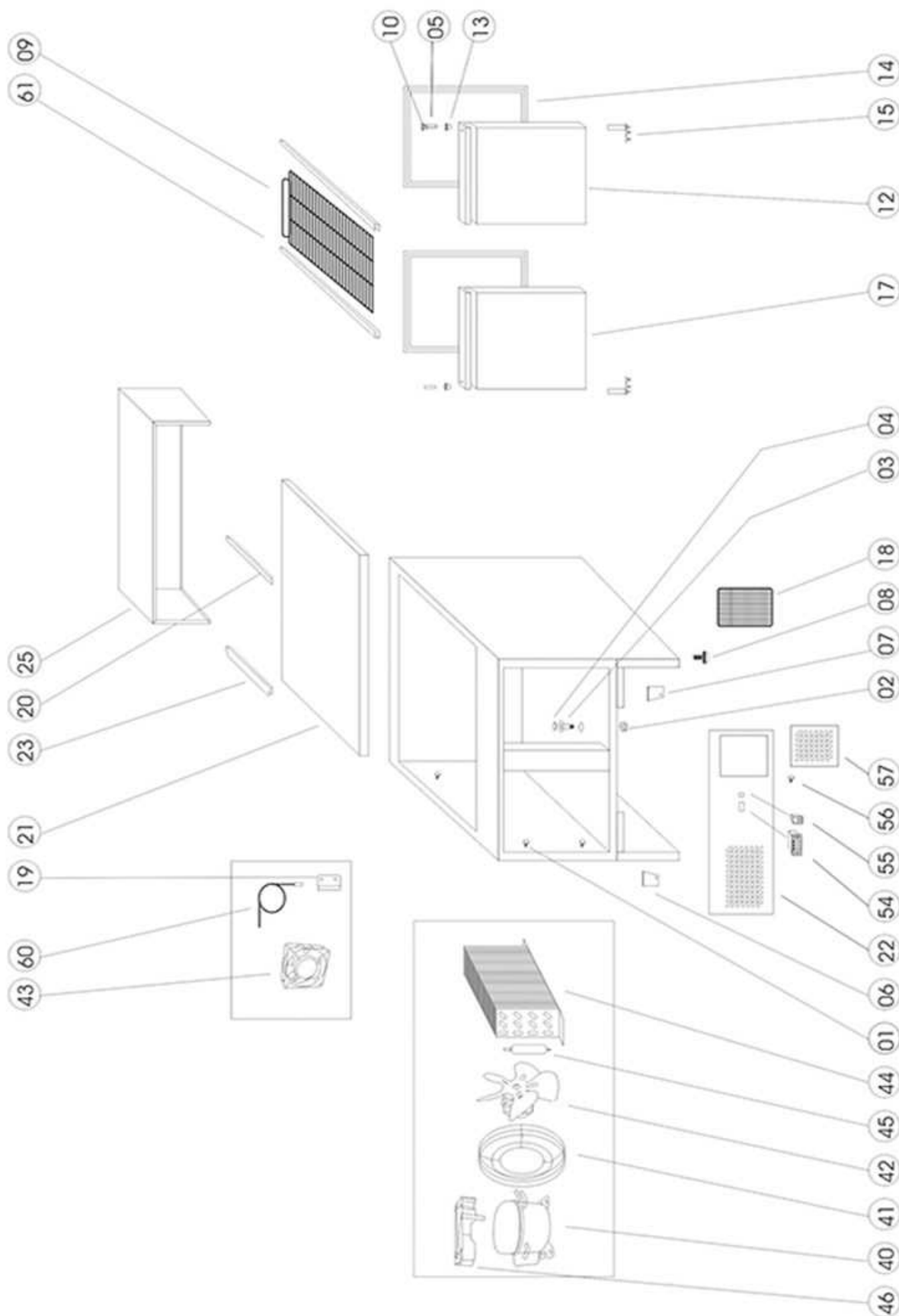


## TF GP92-I



<b>Pos.No.</b>	<b>Part No</b>	<b>Description</b>
1	7110002401	MAIN SWITCH
2	7110000391	THERMOSTAT XR02CX, 20 A RELAY
3	7200000710	DUST FILTER COVER
4	7200000402	FILTER 172X230
5	7200000700	DOWN HINGE RIGHT
6	7200000705	DOWN HINGE AXIS
7	7090000114	DOOR RIGHT
8	7200000805	GASKET 494X396
9	7110005501	SHELF 325 X 570
10	7090000027	TOP HINGE
11	7090000020	FRONT SIDE RAIL LEFT
12	7200000900	ADJUSTABLE FEET
13	7200000530	DRAIN PIPE NUT
14	7200000531	DRAIN PIPE
15	7200000532	DRAIN PIPE COVER
17	7090000021	BACK RAIL LEFT
18	7110005510	GRANITE TOP
19	7120100000	DIVIDER FOR 1/6 PANS 178x16 MM
20	7120100001	SIDE DIVIDER SET FOR 1/6 PANS
21	7090000022	COOLING WELL FRAME
22	7090000119	STAINLESS STEEL TOP
23	7200000311	AIR CUNDUCTOR FOR INTERNAL FAN
24	7200000529	SENSOR FIXED CLIP
25	7110000397	PROBE NTC DIXELL/CAREL 10 Kohm
26	7200000310	INTERNAL FAN SUPPORT
27	7200000305	COND./EVAP. FAN RAH1238B
28	7200000304	CONDENSER
29	7110005515	DEFROST WATER COIL
30	7130001902	EVAPORATOR/CONDENSOR FAN 4650
31	7300000020	BASKET GUARD GRILL
32	7200000850	WATER PAN (PLASTIC)
33	7500005050	COMPRESSOR HPKD190A R600
35	7110005516	CAPILLARY TUBE
36	7200002136	FILTER DRIER 20 G
38	7090000023	CONDENSER AIR CONDUCTOR
40	7090000024	THERMOSTAT COVER BOX
41	7200000814	FRONT PANEL HEXAGONAL
42	7300000002	PLASTIC CAP
43	7130000806	NUT FOR UPPER HINGE
44	7130000804	UPPER HINGE (1 PART)
45	7130000817	BUSHING
46	7090000113	DOOR LEFT
48	7090000025	FRONT SIDE RAIL RIGHT
49	7090000026	BACK RAIL RIGHT
50	7200000701	DOWN HINGE LEFT
61	7110005601	GUIDES (SET) 550X20X20