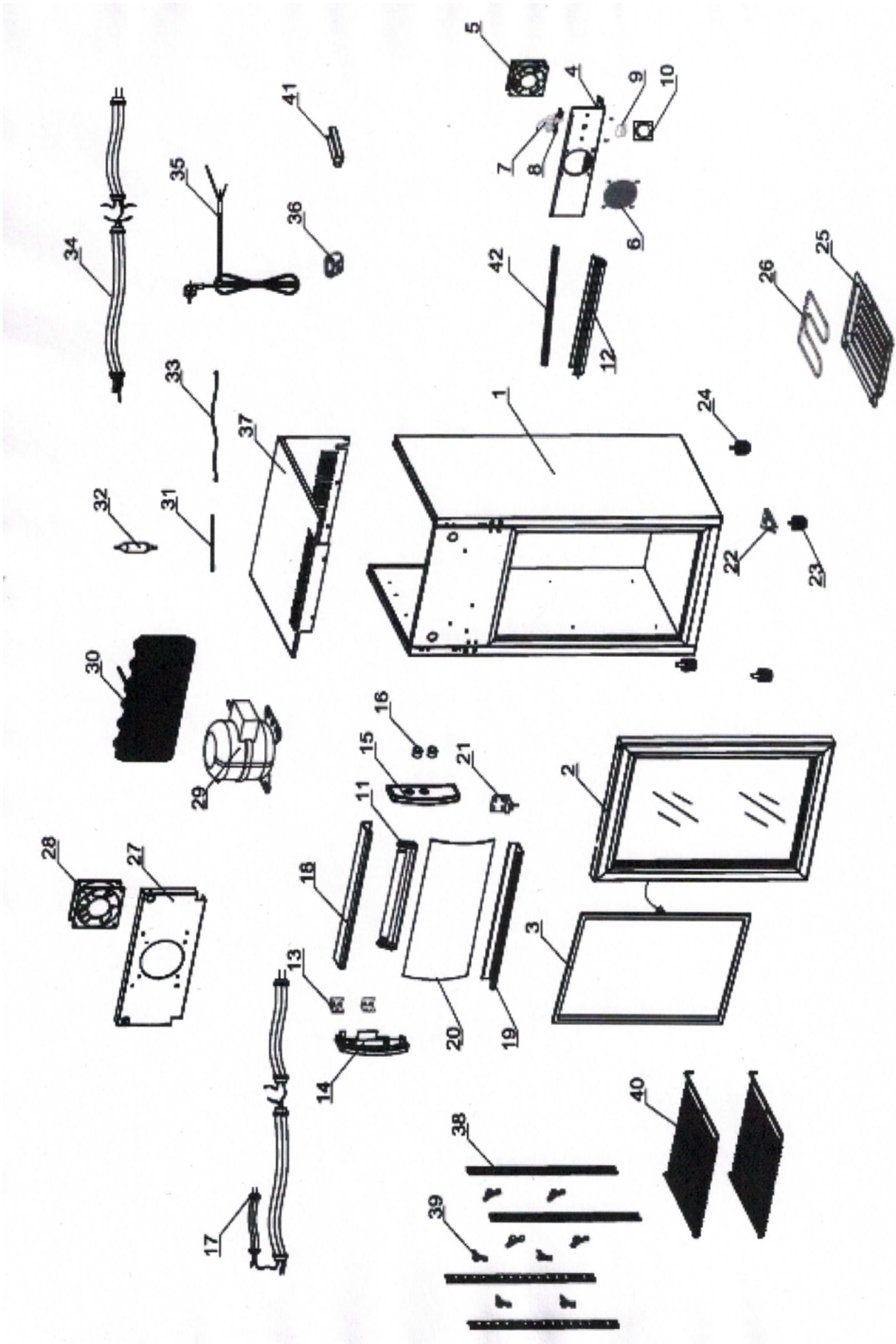


# RESERVDLAR

## SC SC 51



<b>Pos.No.</b>	<b>Part No</b>	<b>Description</b>
2	RES-13389	Glass door 420x579mm SC51
3	RES-13391	Door Gasket SC51
4	RES-19157	Fan board
5	RES-13395	(80x80x25) Evaporator motor
6	RES-13396	Evaporation motor fan cover
7	RES-13397	Mechanical Thermostat
8	RES-13400	Measure sticker of thermostat
9	RES-13399	Thermostat knob
10	RES-13400	Measure sticker of thermostat
11	RES-13401	T4 Light inside complete
11	RES-13402	Internal LED light
12	RES-13403	Internal Light Cover
12	RES-13550	Internal Light Cover
13	RES-13404	Lamp and end caps holder for top light
14	RES-13405	Side cover for top Light cover(left)
15	RES-13406	Side cover for top Light cover(right)
16	RES-13407	Light switch
17	RES-13421	Bottom fan motor board
18	RES-13409	Rail for top light cover(up) SC51
19	RES-13411	Rail for top light cover(down) SC51
20	RES-13413	Top light cover SC51
21	RES-13415	Upper Hinge
22	RES-13416	Lower Hinge
23	RES-13417	Adjustable feet
24	RES-13418	Fixed pin
25	RES-13419	Water Tray
26	RES-13420	Venting tube
27	RES-13421	Bottom fan motor board
28	RES-13422	(120x120x38 ) Evaporator fan motor
29	RES-13423	Compressor
30	RES-13424	Wire Condenser
31	RES-13425	Compressor technology
32	RES-13426	Drier
33	RES-13427	Compressor wire
34	RES-13428	Compressor bundle conductor
35	RES-13429	Power line plug
36	RES-13430	Power cord clip
37	RES-19158	Top blanking plate SC51
38	RES-13433	K-support
39	RES-13434	K-clip
39	RES-19618	K-Clip new version
40	RES-13435	Shelf SC51
41	RES-13553	Power supply for inner LED light
42	RES-13402	Internal LED light