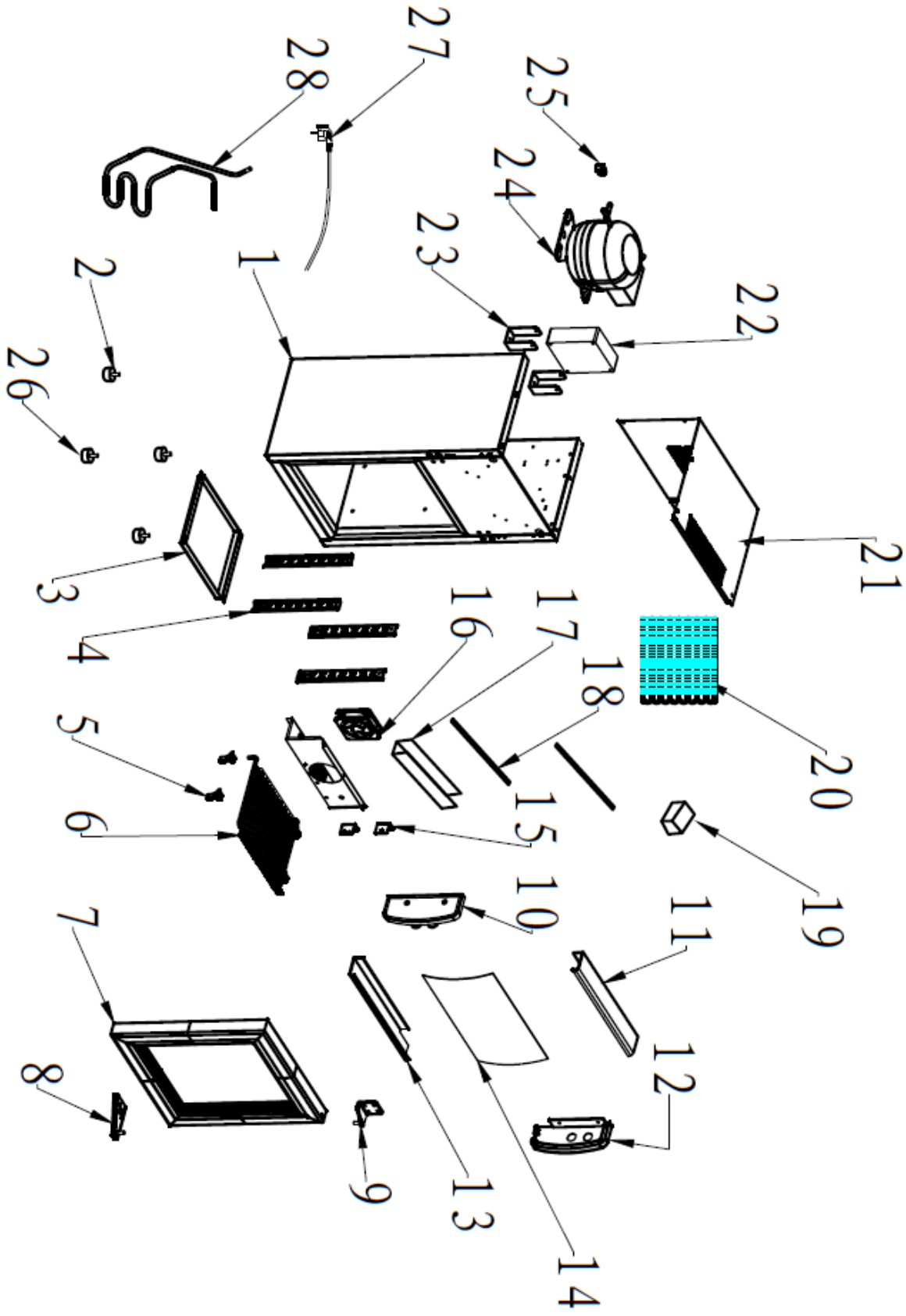


RESERVDLAR

SC SC 21



| Pos.No. | Part No | Description |
|----------------|----------------|---------------------------------------|
| 2 | RES-13417 | Adjustable feet |
| 3 | RES-13419 | Water Tray |
| 4 | RES-19581 | K-support |
| 5 | RES-19618 | K-Clip new version |
| 6 | RES-19582 | Shelf |
| 7 | RES-19583 | Glass door |
| 8 | RES-13416 | Lower Hinge |
| 9 | RES-13415 | Upper Hinge |
| 10 | RES-13405 | Side cover for top Light cover(left) |
| 11 | RES-19584 | Rail for top light cover(up) |
| 12 | RES-13406 | Side cover for top Light cover(right) |
| 13 | RES-19585 | Rail for top light cover(down) |
| 14 | RES-19586 | Top light cover |
| 15 | RES-19587 | Lamp holder for top light cover |
| 16 | RES-13395 | (80x80x25) Evaporator motor |
| 17 | RES-19588 | Internal Light Cover |
| 18 | RES-19589 | LED inner light |
| 19 | RES-13553 | Power supply for inner LED light |
| 20 | RES-19590 | Wire Condenser |
| 21 | RES-19591 | Top blanking plate |
| 22 | RES-13422 | (120x120x38) Evaporator fan motor |
| 23 | RES-19592 | Support for condenser fan motor |
| 24 | RES-19593 | Compressor |
| 25 | RES-19594 | Power cord clip |
| 26 | RES-19595 | Fixed pin |
| 27 | RES-19596 | Power line plug |
| 28 | RES-19597 | Venting tube |