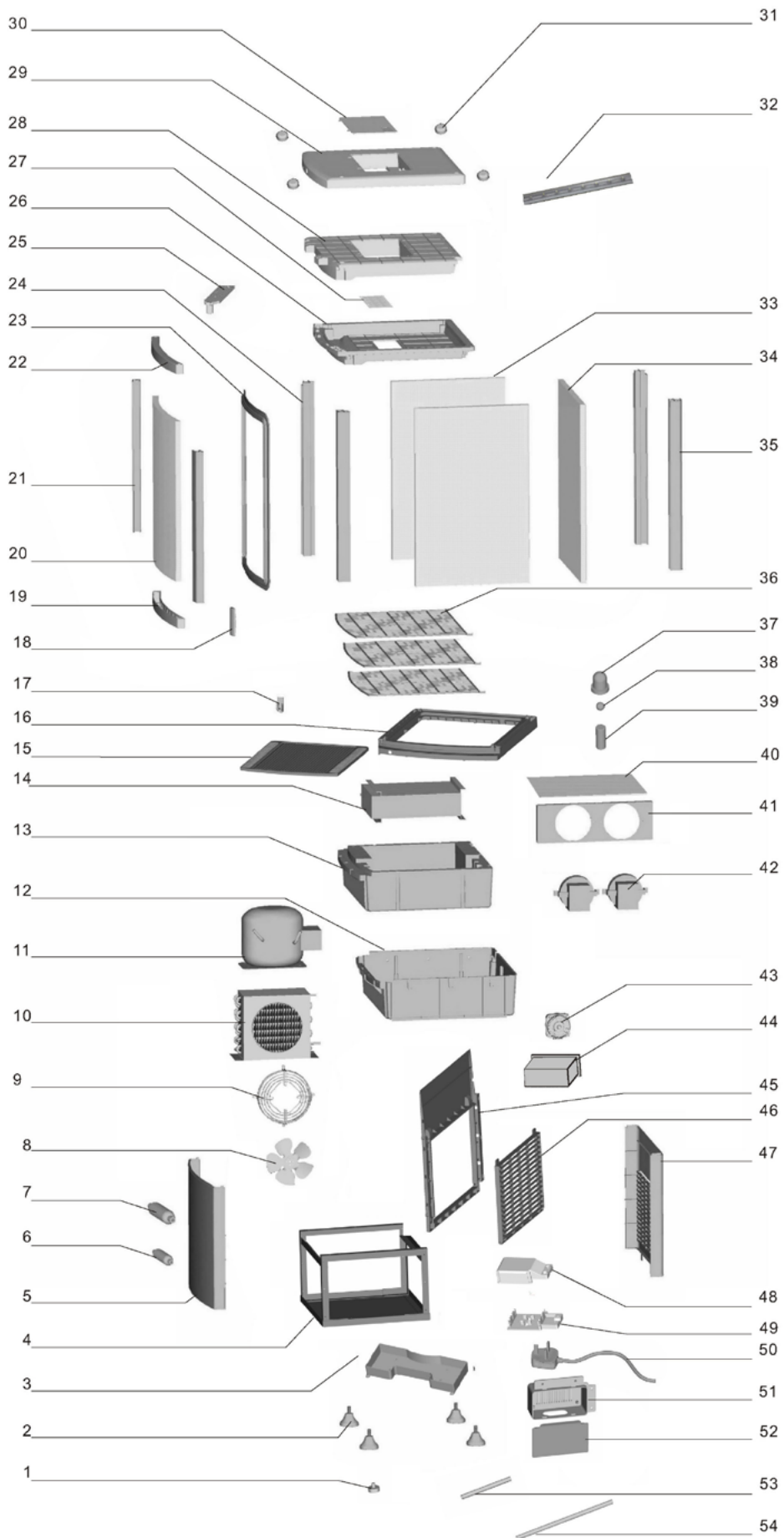


RESERVDELAR

SC RTC 287 BE



Pos.No.	Part No	Description
1	RES-15615	Fixed stopper
2	RES-15614	Base feet set of 4
3	RES-15613	Water receiver
4	RES-15612	Base
5	RES-15611	Curved front base panel
6	RES-15610	Accumulator
7	RES-15609	Dry filter
8	RES-15608	Fan blade of condenser
9	RES-15607	Fan cover
10	RES-15606	Condensor
11	RES-21553	Compressor
12	RES-15604	Plastic base of evaporator
13	RES-15603	Foam base of evaporator
14	RES-15602	Evaporator
15	RES-15601	Inner ventilated tray
16	RES-15600	Inner ventilated tray
17	RES-15599	Shelf clip set of 2
18	RES-15598	Door handle
19	RES-15597	Bottom door frame
20	RES-15596	Door glass
20,1	RES-16762	Door complete including frame
21	RES-15595	Left&right door frame
22	RES-15594	Upper door frame
23	RES-15593	Door Gasket
24	RES-15592	Front poles of shelf 2 pcs
25	RES-15591	Upper gemel
26	RES-15590	Light ceiling
27	RES-15531	Transparent light ceiling
28	RES-15589	Foam of light ceiling
29	RES-15588	Outer plastic panel
30	RES-15529	Outer Light cover
31	RES-15587	Screw cover 4 pcs
32	RES-15586	LED lamp
32,1	RES-16761	Trafo Led
33	RES-15585	Side glass
34	RES-15584	Rear glass
35	RES-15583	Rear Pole set of 2
36	RES-15582	Shelf
37	RES-15514	Door Shaft
38	RES-15513	Steel ball
39	RES-15512	Door pin
40	RES-15581	Cusion of evaporator
41	RES-15580	Motor fixer
42	RES-15579	Motor of evaporator
43	RES-15578	Motor of condensor
44	RES-15577	Digital Controller
45	RES-15576	Outer Enclosure frame
46	RES-15575	Inner Enclosure frame
47	RES-15574	Rear grill
48	RES-15573	Box cover
49	RES-15572	Circuit board box
50	RES-15571	Power code
51	RES-15570	Control box
52	RES-15569	Control panel
53	RES-15497	Gas tube
54	RES-15568	Connected tube